

Getting Started With Your Weelight

Inside the box :

Inside the box
1 Weelight
1 remote + its base
2 self tightening collars
1 powerbank
Available functions :
Turning lights
Warning lights
Position lights
Brake lights

Use of the harness pocket buttons:



On/Off button



On/Off warning button



Pairing button to link one remote to one to light harness

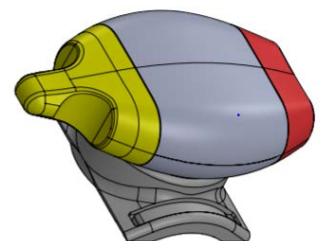
Remote description:

Yellow stick : turning indicator

• **Push** once to activate turn signal, push again same direction to cancel

Red button :

- **Short press** : enables warning lights
- **5 seconds long press** : reverses



Step 1 : Placing the remote on your handlebar

Use the small black zip ties to secure the remote base on your handlebar where it best fits your need. Once it is done, place the remote in the base and give it a 90° clockwise rotation. The remote will then lock on the base.

For better use, four positions are available.

Warning : we are still working on the best way to adapt the remote on its base to offer you a wider setting range and a new remote would be available soon. We will send you one as soon as it is available.

Step 2 : straps adjustment

With the four front buckle adjustments you can adjust the straps length to get a comfortable, snug fit for your body size. (The same as you would for a backpack.)

Step 3 : Start Up

First, you have to plug the battery to the harness with USB connector placed inside the pocket.



Once this is done, the white and red lights will operate in flashing mode.

A press on this button  will turn off the harness.

Every harness is usually paired with the remote they are delivered with. Nevertheless, a first push on the yellow stick will be necessary to get the harness out of sleep mode.

If ever this doesn't work, please follow the following instructions to pair remote to harness.

Protocole appairage commodo / harnais

- press 5 secondes on the  button on the harness pocket
- push 3 on the remote stick fois to enable the remote/harness link
- Accept the connection by pressing the  button one more time.



Warning :

We are still working on the battery charge issues and we advise you to disconnect the battery from the harness when not in use for a long time. If not, the harness will continue to draw energy from the battery.